



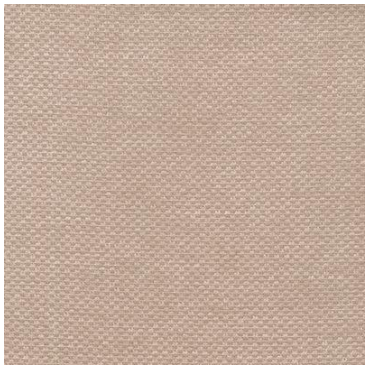
Bingle

| | |
|---------------------|--|
| Colour(s) | Blossom, Ecru, Gull, Java, Mist, Mushroom, Ochre, Pearl, Pine, Pool, Pumice, Royal, Sapphire, Sesame, Shadow, Snow, Sprout, Terracotta |
| Product Type(s) | Heavy Commercial |
| Attributes | Halo Easy Care, Oekotex 100 |
| Styles | Modern, Plain, Texture, Urban |
| Composition | 100% Polyester |
| Pattern Match | No |
| Pattern Repeat (cm) | Plain |
| Railroaded | No |
| Width (cm) | 145CM |
| Weight (gsm) | 360.0 |
| Stain Repellent | No |
| FIAA Care Label | Label 3 - Non Pile Fabrics |
| Usage |   Upholstery Cushion |
| Guarantee | 3 Years in accordance with our product type and care instructions |

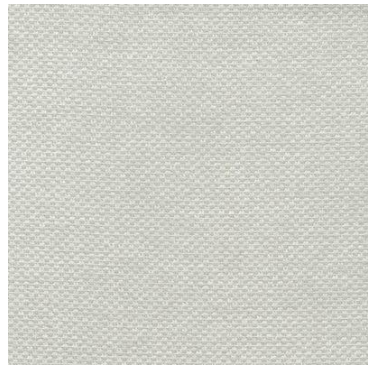
Test Results

| | |
|--|---------------------|
| Wyzenbeek (ASTM D3597, mesh, 4lb/3lb) | 65,000 Cycles |
| AS/NZ 3837 | No |
| Seam Slippage (ISO 13936-2, Load 180) | Warp 2.3, Weft 3.0 |
| Piling Resist (ISO 12945-2) | 5 |
| Colourfastness to Light Xenon arc (ISO 105-B02, blue std 6) | >6 |
| Colourfastness to Rubbing (ISO 105-X12) | Dry 4/5, Wet 4 |
| Free and Hydrolysed Formaldehyde | Not detectable |
| Flammability AS/NZS 1530.3 - 1999 Ignitability (0-20) Spread of Flame (0-10) Heat Involved (0-10) Smoke Developed (0-10) | 11 0 2 4 |
| Oekotex Standard 100 | SHO15 147778 TESTEX |
| Quality Management System ISO9001 | No |

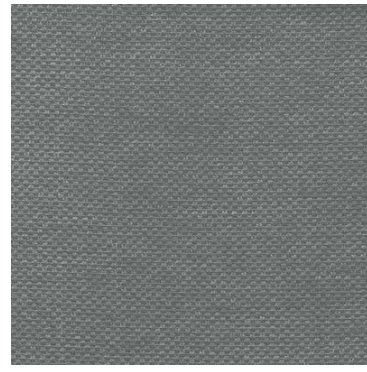
Bingle



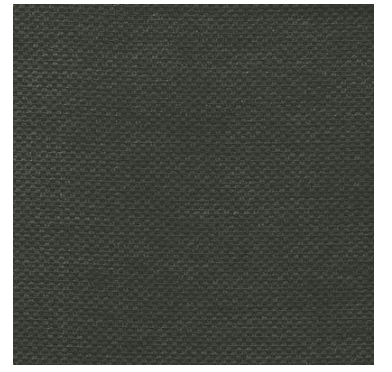
Blossom



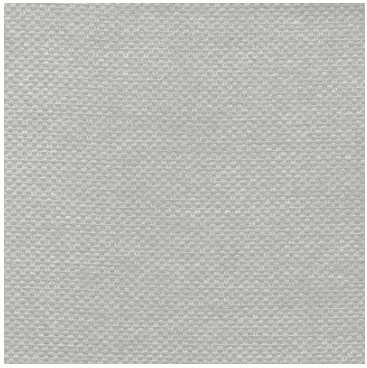
Ecru



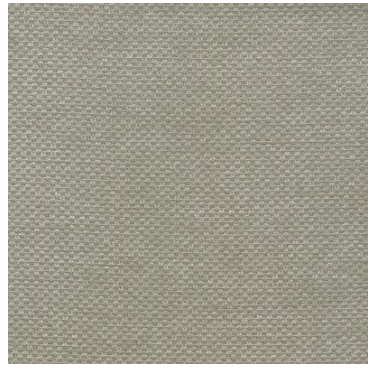
Gull



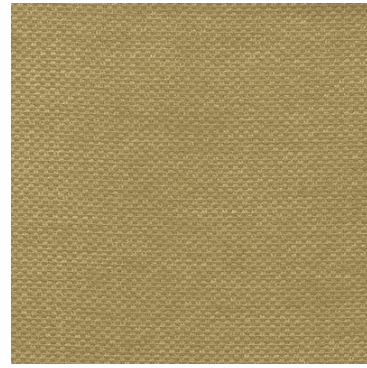
Java



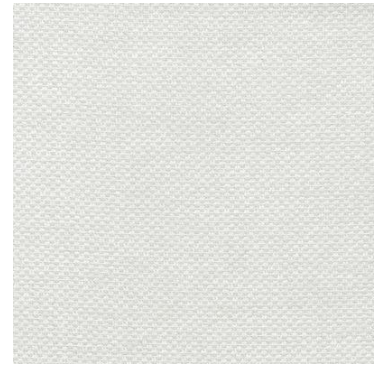
Mist



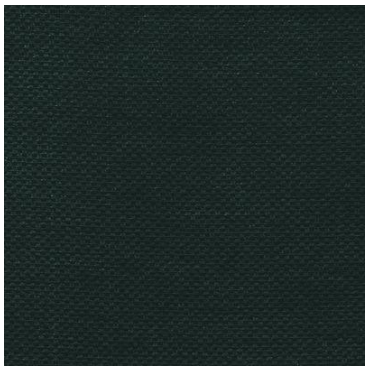
Mushroom



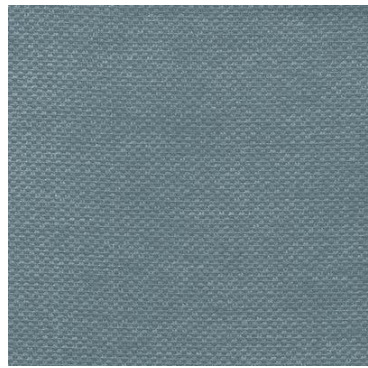
Ochre



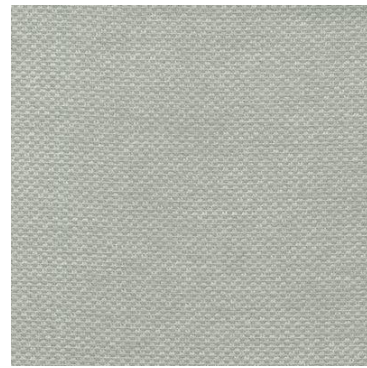
Pearl



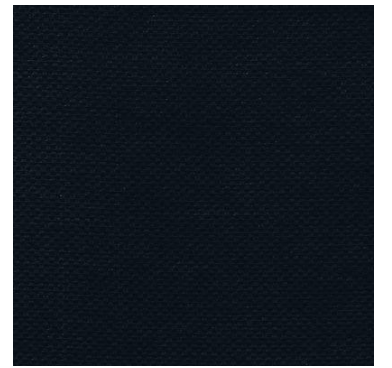
Pine



Pool



Pumice



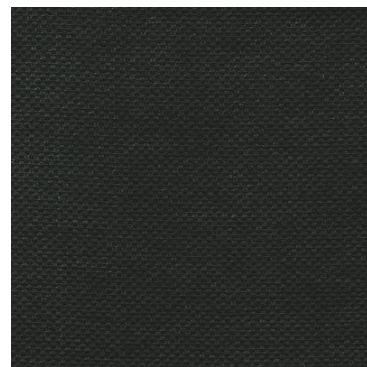
Royal



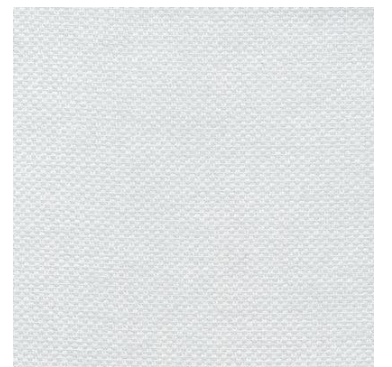
Sapphire



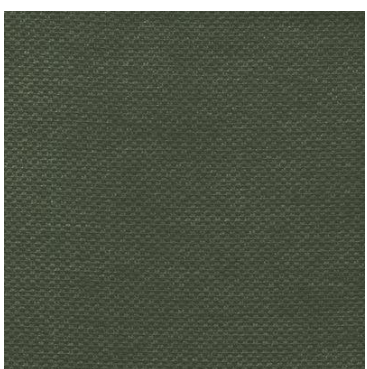
Sesame



Shadow



Snow



Sprout



Terracotta